



CAROLINAS CREDIT UNION FOUNDATION



2019 Impact Report and Donor Recognition

GREAT THINGS CAN HAPPEN
WHEN CREDIT UNIONS OF
THE CAROLINAS, FOCUSED ON
THEIR FOUNDING PRINCIPLE
OF CONCERN FOR COMMUNITY,
UNITE THEIR RESOURCES
TOWARD THE GREATER GOOD.

MISSION

To empower and inspire credit unions in the Carolinas through collaborative opportunities to enrich our communities.

VISION

We are a philanthropic partner to all credit unions in the Carolinas through:

Empowering

social responsibility efforts that are self-directed by credit unions, chapters and business partners.

Inspiring

credit unions by sharing and celebrating philanthropic efforts.

Collaborating

on programs and projects that support our cooperative principle of concern for the community.

SERVICES



Community Grants

The impact of the work is visible across the Carolinas, proving that by leveraging our cooperative spirit, we can change our communities.



Disaster Relief Coordination

We lend a hand in time of need for our local, national and international credit union communities.



Scholarship Program Management

Educational dreams by credit union members are achieved through our streamlined scholarship program for credit unions and chapters.



Annual Award Gala

We recognize and celebrate our credit union heroes and organizations that exemplify our ideas.



Local Charitable Giving

We oversee donor funds on behalf of credit unions, business partners and chapters for non-profit grant initiatives.



Small Credit Union Grants

When budget limitations prevent professional development opportunities, the Foundation can help.

2019

Board of Directors



Willard Ross
Chair
Coastal FCU
Raleigh, NC



Bob Bruns
Vice-Chair
Charlotte Metro FCU
Charlotte, NC



Bonnie Ciuffo
Secretary
SC FCU
N. Charleston, SC



David Brehmer
Treasurer
Vizo Financial
Greensboro, NC



Mark Caverly
Immediate Past Chair
Local Government FCU
Raleigh, NC



Leigh Brady
State Employees' CU
Raleigh, NC



Mark Curran
Lion's Share FCU
Salisbury, NC



Frankie DeDonato
PFP Services
Roswell, GA



Todd Hall
Truliant CU
Winston-Salem, NC



Brian McKay
SC Telco FCU
Greenville, SC



Jennifer Parker
Founders FCU
Lancaster, SC



Dan Schline
Ex-Officio
Carolinas CU League
Raleigh, NC



Brian Sponaugle
Greenville FCU
Greenville, SC



Sam Whitehurst
Summit CU
Greensboro, NC

Staff

Lauren Whaley, CUDE
President

Stephanie Denning, CPA
Controller
Carolinas CU League

Frances Moore
Programs Administrator

Jasmine Jackson
Development Coordinator

A Message

From the President

Since joining the Carolinas Credit Union Foundation in December 2015, I continue to be overwhelmed with gratitude for the support of the credit union system in the Carolinas. Together we have renewed the Foundation's financial strength and increased assets through the growth of our fund management services. We are honored to be a premier partner for charitable giving and helping the credit union system achieve greater community impact!

The Carolinas Credit Union League remains our most valued and trusted supporter. The Foundation relies on the League's accounting department for our fund management services at a below-market rate—savings we are able to pass along to you. We are able to outperform other community foundations in terms of service, reliability, and price, and we look forward to continued and new fund management partnerships for scholarships, charitable giving, named endowments, employee hardships and memorials.

With your support of our new Community Endowment Fund and our existing Community Investment Fund at Vizo, we have been able to grow our scholarship and grant programs. In 2020, we are launching a new partnership with the chapter system to provide community grants to our local non-profits. Also through our Programs Fund, the Foundation is able to help credit union members across the Carolinas achieve their educational dreams through academic and needs-based scholarships, and our small credit unions are afforded new opportunities to educate and train their staff.

In the following pages we recognize our accomplishments and the many who are dedicated to ensuring the Carolinas Credit Union Foundation continues to thrive. Together we are proving the strength of the cooperative spirit and that our commitment to the "people helping people" philosophy is stronger than ever.

With a grateful heart,

Lauren Whaley



Pictured with Kalle, the pediatric facility dog at the Prisma Health Children's Hospital in Greenville, SC. In 2019, the Upstate SC Credit Unions Annual Giving Campaign Committee (a fund managed by the Foundation) raised \$25,000 to support the hospital and its facility dogs program. The Children's Hospital currently has three facility dogs: Kalle, Kenzie, and Vivi, who are all members of The Canine F.E.T.C.H. (Friends Encouraging Therapeutic Coping and Healing) Unit. These furry friends help make the hospital a more pawstitive place.

Financials: 2019 and a Look at the Past

Audit	2019*	2018	2017	2016	2015*
Net Income	\$763,921	\$665,702	\$18,268	\$265,016	(\$622,523)
Net Assets	\$2,960,204	\$2,188,636	\$1,523,934	\$1,505,666	\$1,240,650
	*Internal financials through Q3				*\$800,000 Reach pledge booked

EMPOWER. INSPIRE. COLLABORATE.

Victory Junction

Reach Program 2015-2019 Sponsorship

Through the Foundation's exclusive five-year sponsorship, Victory Junction has delivered smiles to our Children's Hospital and Ronald McDonald Houses of the Carolinas

30,000+ children have experienced the Reach Magic



\$900,000+ raised from the Carolinas credit union system



MORE THAN A **DOZEN** give-back days organized for credit union volunteers

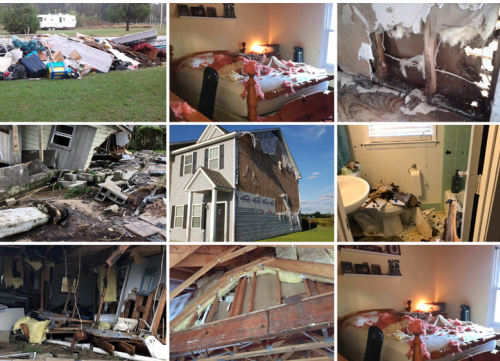


1000s of assembled Magic Kits and **100s** of volunteer hours

Disaster Relief

Helping our credit union family in times of need

263 grants **\$197,918.43** in aid to employees in the Carolinas from 2018-2019



Scholarships

Empowering our Youth

Any member from a North or South Carolina credit union is eligible to apply and winners are awarded based on academic performance, community leadership, and financial need.

\$275,000 awarded from managed scholarship funds

\$25,000 awarded from the Foundation's Programs Fund

Professional Development Grants

Impacting Credit Union's Educational Training Needs and Growth

\$25,000 awarded

Supported by the Foundation's Programs Fund and Summit Credit Union through the James V. & Elizabeth N. Hamilton Foundation

Championing our small credit unions with \$50 million or less in assets



Community Grant Partnerships

Launching in 2020 to support our local giving

In partnership with the credit union chapter network, the Foundation will be matching fundraising dollars for support-worthy local nonprofits. Two pilot grants were awarded in 2019 in collaboration with the North Piedmont and Piedmont Chapters.

Memorialized Giving

Healing with Support

The Foundation is grateful to receive donations in dedication to or in honor of individuals. In 2019, we served as a collection point for credit union support after the tragic loss of Shamona Mosley at Premier FCU. Funds collected will go to her four children.



Charitable Giving Management

Championing local charities

The Foundation assists credit unions, chapters and business partners with the management of charitable giving, with the added benefit of tax-deductibility to all donors who make a contribution. We are also guiding credit unions on CDA disbursements and starting their own foundations through a managed donor-advised fund.

\$565,000+ in grants distributed to local non-profits from managed funds

Awards Gala

A Night to Inspire

The Foundation is honored to annually recognize our credit union heroes and the great work taking place in our communities. We hope to see you on **January 30, 2020!**



2019

Foundation General Fund

Operational Supporters

The Foundation’s annual budget of less than \$235,000 fully funds our operations, including: staffing, development and travel of one full-time and two part-time employees; accounting & HR services with the League; all external legal and auditing fees; marketing support; technology upgrades; and our software and equipment. Your support through the League dues process, along with income from our fund management partnerships or direct, unrestricted contributions, are our only sources of operational support.

The Foundation would like to extend its sincerest appreciation to the following operational supporters in 2019. Thank you for your continued dedication to the Carolinas Credit Union Foundation.

\$25,000+

Coastal CU
Local Government FCU
State Employees’ CU

\$10,000+

Truliant FCU
SC Federal CU

\$5,000+

Charlotte Metro FCU
Family Trust FCU
Palmetto Citizens FCU
SC Telco FCU
Vizo Financial

\$2,000+

Carolina Telco FCU
Greenville FCU
Heritage Trust FCU
Members CU
Mountain CU
Piedmont Advantage CU
Premier FCU
SPC CU
Summit CU
Telco Community CU

Up to \$2,000

Abbeville Community FCU
Acclaim FCU
AnMed Health FCU
Arrowpointe FCU
Bragg Mutual FCU
Brookland FCU
Carolina Foothills FCU
Charlotte Fire Dept CU
CommScope CU
Edisto FCU
Emerald Credit Assn FCU
Fayetteville Postal CU
First Carolina People’s CU
Georgetown Kraft CU
G.H.S FCU
Greensboro Municipal FCU
Greenville Heritage FCU
Greenwood Municipal FCU
GUCO CU
Health Facilities FCU
HealthShare CU
HopeSouth FCU
HSM FCU
Lion’s Share FCU
Lithium FCU
Neighbors United FCU
NC Community FCU
NOVA CU
Nucor Employees CU
Palmetto First FCU
Palmetto Health CU
Palmetto Trust FCU

Pee Dee FCU
Riegelwood FCU
SC State FCU
SCI FCU
S. C. H. D. DIST #7 FCU
Santee Cooper CU
Secured Advantage FCU
Shuford FCU
Spartan FCU
Sumter City CU
Team & Wheel FCU
TCP Credit Union
Winston-Salem FCU

Foundation Board of Directors

Marketing support from
Your Marketing Co.
& Local Government FCU

Accounting, HR and
Communications Support from
the Carolinas CU League

Payroll deduction supporters from
the Carolinas CU League & Vizo
Financial.

2019

Foundation Programs

Fund Supporters

The Foundation’s scholarship and grant programs are funded exclusively by the Community Investment Fund and the Community Endowment Fund managed by Vizo Financial. This year, the Foundation’s Wine Pull and Silent Auction fundraiser held at the League’s Annual Meeting resulted in \$7,000 raised and directed to the Foundation’s Programs Fund.

Additionally, the Foundation would like to especially recognize Palmetto Citizens FCU. In 2019 they generously donated \$12,494 to the Carolinas Credit Union Foundation’s Programs Fund in the name of participating credit unions and presenting speakers for the May Employees Conference and the September Leadership Conference.

Community Investment Fund Supporters

The Community Investment Fund at Vizo Financial Corporate Credit Union allows credit unions to share with the Foundation a portion of their interest revenue in support of our Programs Fund. Any investment product can be part of the Community Investment Fund, and quarterly specials are available.

Caro FCU	Founders FCU	Heritage Trust FCU	Premier FCU
Carolina Foothills FCU	GHS FCU	HopeSouth FCU	Riegelwood FCU
Charlotte Metro FCU	Greenville FCU	Lion’s Share FCU	S.C. Telco FCU
Duke University FCU	HealthShare CU	Members CU	Truliant FCU

New Community Endowment Fund Supporters

As we look to the future, our Community Endowment Fund will support collaborative community impact projects in partnership with credit unions and chapters.

Local Government FCU	Members CU	Shuford CU
----------------------	------------	------------

Annual Meeting Wine Pull and Silent Auction Supporters

Credit Unions:

Allegacy FCU	Health Facilities FCU	Palmetto Health FCU
Carolina FCU	Heritage Trust FCU	Piedmont Advantage CU
Carolina Trust FCU	Lion’s Share FCU	Premier FCU
Charlotte Metro FCU	Local Government FCU	SC Telco FCU
Coastal CU	Members CU	Sharonview FCU
Edisto FCU	Mid Carolina FCU	Shuford FCU
Family Trust FCU	Mountain CU	SC Federal CU
Founders FCU	NC Community FCU	SPC CU
Greenville FCU	Nova CU	State Employees’ CU
HealthShare CU	Palmetto First FCU	Summit CU

Business Partners:

The Baker Group	CUNA Mutual Group	SCF Solutions
Cantey, Tiller, Pierce and Green	Dolphin Debit	State National Companies
Carolinas CU League	My CU Services	Vizo Financial
College Foundation of NC	PFP Services	
Creative Builders	Route 66	



2015-2019

Victory Junction

Reach Fund Supporters

Direct Contributors to the Reach Fund

Carolinas CU League \$50,000	SAFE FCU \$3,500
Coastal CU \$25,000	SC State FCU \$7,000
Fort Bragg FCU \$15,000	Sharonview FCU \$7,500
Founders FCU \$90,000	State Employees’ CU \$125,000
Lion’s Share FCU \$19,200	Tarheel Chapter of Credit Unions \$10,000
Local Government FCU \$125,000	Truliant FCU \$2,500
Lowcountry CUaware Chapter \$5,000	Vizo Financial \$15,000
North Piedmont Chapter \$5,000	Winston-Salem FCU \$10,500
Piedmont Advantage CU \$42,000	
Piedmont Chapter of Credit Unions \$18,000	

Up to \$2,000

Acclaim FCU	Santee Cooper CU
Carolina Foothills FCU	SC Telco FCU
ElecTel Cooperative FCU	Shuford Federal CU
HealthShare CU	SPC FCU
Palmetto Citizens FCU	TCP CU

Awards Gala, January 31, 2019 Sponsors

\$5,995 Premier	\$3,995 Dinner	\$1,995 Table
Carolinas CU League	Local Government FCU	Carolina Trust FCU
\$4,995 Presenting	\$2,995 Cocktail Reception	Greenville FCU
CUNA Mutual Group	Truliant FCU	Sharonview FCU
Your Marketing Co		

15th Annual Carolina’s Cup, October. 27-29, 2019 Sponsors

This year marked the 15th Annual Carolinas Cup hosted by CUNA Mutual Group. A special thanks is owed to CUNA Mutual and the other sponsors, auction contributors and bidders, and the players! Over the last 15 years, more than \$800,000 has been raised for Victory Junction!

\$6,500 Camp Champion	\$4,500 Smile Sponsor	\$1,500 Fun Funder
Assurant	Charlotte Metro CU	AdvantEdge Analytics
Carolinas CU League	Truliant FCU	Greenville FCU
Carolinas Telco FCU	\$2,500 Camp Magic	Howe Construction, Inc.
CUNA Mutual Group	Lion’s Share FCU	Members CU
Local Government FCU	Sharonview FCU	PFP Services
	Vizo Financial	Premier FCU
		One Digital Health and Benefits



2018-2019

Disaster Relief

Fund Supporters

The Carolinas faced damage from Hurricanes Florence and Dorian in the last two years. The following in the Carolinas are recognized for their generosity in a time of need.

Allegacy FCU \$7,500	Lion’s Share FCU \$2,500
ArrowPointe FCU \$500	Mountain CU \$2,000
Blue Flame CU \$2,500	MTC FCU \$10,000
Carolinas CU League \$5,000	Nearman, Maynard, Vallez, CPAs \$500
Carolinas Telco FCU \$2,500	Palmetto Citizens FCU \$2,500
Carolina Trust \$500	Pee Dee FCU \$1,000
Charlotte Fire Dept CU \$2,000	SAFE FCU \$25,000
Charlotte Metro \$5,000	SC Telco FCU \$25,000
Coastal CU \$25,000	Spartan FCU \$100
Dolphin Debit Access \$200	SPC CU \$10,000
Duke University FCU \$1,000	Vizo Financial \$25,000
Family Trust FCU \$2,500	West Division FCU \$500
Greensboro Municipal FCU \$5,000	

Individual Donors From: Carolinas CU League, Coastal CU, G.H.S. FCU, Local Government FCU, Piedmont Advantage CU, and Summit CU

Thank you for your continued dedication
to the Carolinas Credit Union Foundation.

Carolinas Credit Union Foundation
PO Box 1787
Columbia, SC 29202
www.carolinasfoundation.org



Connect with us:



Lauren Whaley | 919.600.8219
lwhaley@carolinasfoundation.org